

## Chatillon® 1300 Series Autopsy Scales

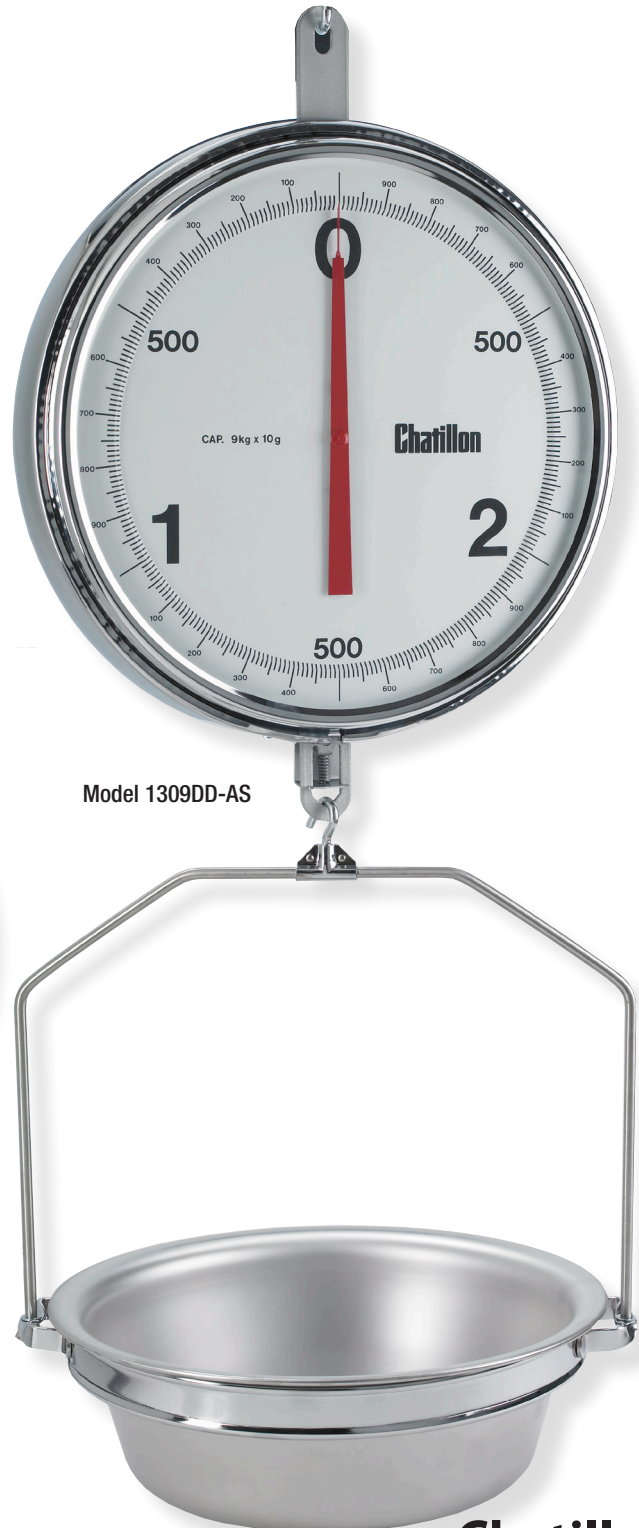
The CHATILLON® 1300 Series mechanical hanging scales feature a large, 13-inch (330 mm) double dial with chrome-plated housing. Scales have large numerals and graduations for easy reading. Scale capacity is achieved in 3 dial revolutions. Dials are glass-covered with one dial reading clockwise and the other counterclockwise. The dials feature bold black numbers and graduations with a contrasting red pointer. Two brass dashpots eliminate pointer oscillation for accurate, stable readings. Stainless steel pinion and bronze rack combination ensure low friction performance even in elevated temperatures. A zero adjust screw allows for tare outs up to 10% of dial reading (3.3% of scale capacity). Scale may be supplied with bottom hook or removable pan. The removable pan is constructed of 300 series stainless steel and features drain holes per USDA specifications. Scales include holding loop.

### Features

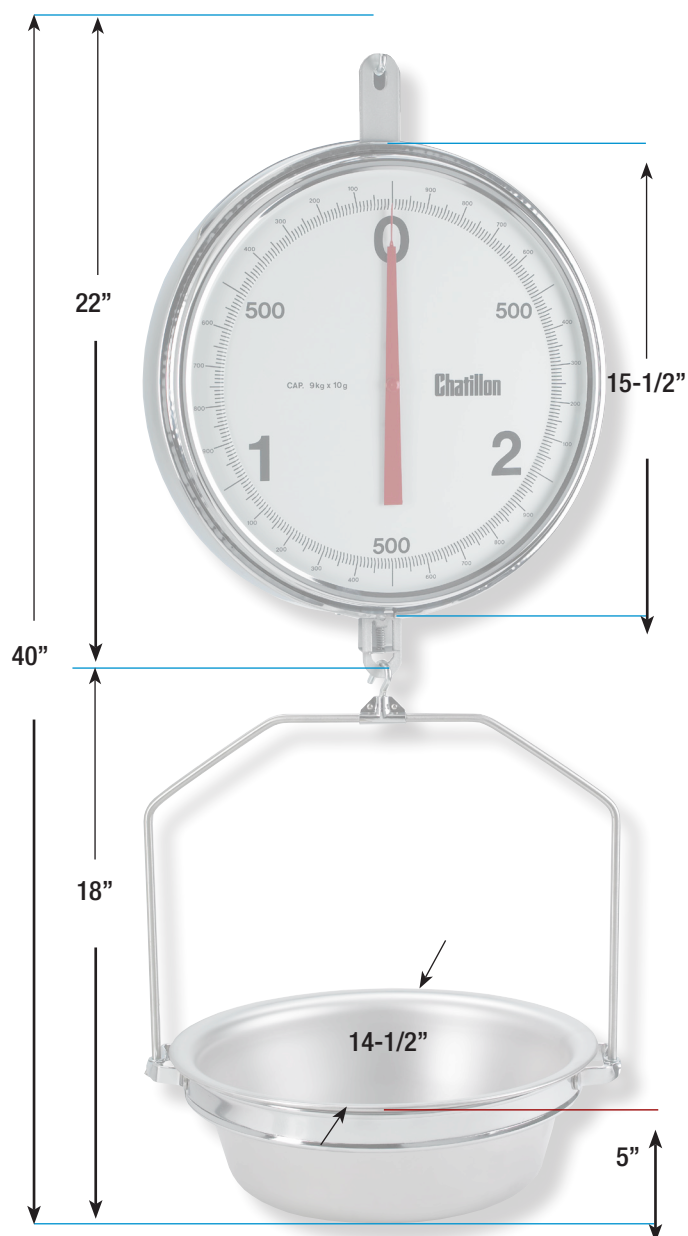
- Temperature Compensated Dual Spring Mechanism
- No Pointer Oscillation
- Full Capacity in Three Pointer Revolutions
- Double 13-inch Dials (Glass Covered)
- Bottom Hook or AS Attachments
- 1 Year Warranty

### Specifications

<b>Accuracy:</b>	See Ordering Table
<b>Dial Graduations:</b>	3 kg x 3 g or 5 kg x 25 g
<b>Maximum Overload:</b>	120% of Rated Capacity
<b>Tare Capacity:</b>	10% Full Scale Capacity
<b>Operating Temperature:</b>	45°F to 100°F (7°C to 38°C)
<b>Weight with Hook:</b>	14 lbs (6.4 kg)
<b>Weight with AS Pan:</b>	18 lbs (8.2 kg)



## Dimensions



## Accessories

Part No.	Description
5854	Bottom Hook
SPK-SCALE-AS	AS Pan Assembly ( 4 lbs)
7436-1	AS Pan Only
16097	Bow, for AS Pan
16098	Ring, for AS Pan

## Ordering

### Bottom Hook Models

Model	Resolution	Range	Scale Divisions	Tolerance		%Accurate
				Division	Weight	
1309DD-H	9 kg x 10 g	0 - 1/2 kg	0 - 50	±1/2 d	±5 g	±0.05%
		1/2 - 2 kg	51 - 200	±1 d	±10 g	±0.11%
		2 - 4 kg	201 - 400	±1-1/2 d	±15 g	±0.17%
		5 - 9 kg	400 +	±2-1/2 d	±25 g	±0.28%
1315DD-H	15 kg x 25 g	0 - 1 kg	0 - 50	+1/2 d	±12.5 g	±0.08%
		2 - 5 kg	51 - 200	±1 d	±25 g	±0.17%
		6 - 10 kg	201 - 400	±1-1/2 d	±37.5 g	±0.25%
		11 - 15 kg	400 +	±2-1/2 d	±62.5 g	±0.42%

### Sanitary AS Pan Models

Model	Resolution	Range	Scale Divisions	Tolerance		%Accurate
				Division	Weight	
1309DD-AS	9 kg x 10 g	0 - 1/2 kg	0 - 50	±1/2 d	±5 g	±0.05%
		1/2 - 2 kg	51 - 200	±1 d	±10 g	±0.11%
		2 - 4 kg	201 - 400	±1-1/2 d	±15 g	±0.17%
		5 - 9 kg	400 +	±2-1/2 d	±25 g	±0.28%
1315DD-AS	15 kg x 25 g	0 - 1 kg	0 - 50	+1/2 d	±12.5 g	±0.08%
		2 - 5 kg	51 - 200	±1 d	±25 g	±0.17%
		6 - 10 kg	201 - 400	±1-1/2 d	±37.5 g	±0.25%
		11 - 15 kg	400 +	±2-1/2 d	±62.5 g	±0.42%

### UK

Tel +44 (0)1243 833 370  
uk-far.general@ametek.co.uk

### France

Tel +33 (0)1 30 68 89 40  
general.lloyd-instruments@ametek.fr

### Germany

Tel +49 (0)2159 9136 510  
info.mct-de@ametek.de

### Denmark

Tel +45 4816 8000  
ametekdk@ametek.com

### USA

Florida  
Tel +1 (727) 538 6000  
chatillon.fl-lar@ametek.com

### California

Tel +1 (800) 444 1850  
sales@crystalengineering.net

### India

Tel +91 22 2836 4750  
ametekdk@ametek.com

### Singapore

Tel +65 6484 2388  
ametekdk@ametek.com

### China

Shanghai  
Tel +86 21 5868 5111

### Beijing

Tel +86 10 8526 2111

### Guangzhou

Tel +86 20 8363 4768  
lloyd@ametek.com.cn