



AfterMarket
Parts • Service • Support • Accessories

Service Parts List

Click on the model you need parts for

Defender 3000 series Indicator

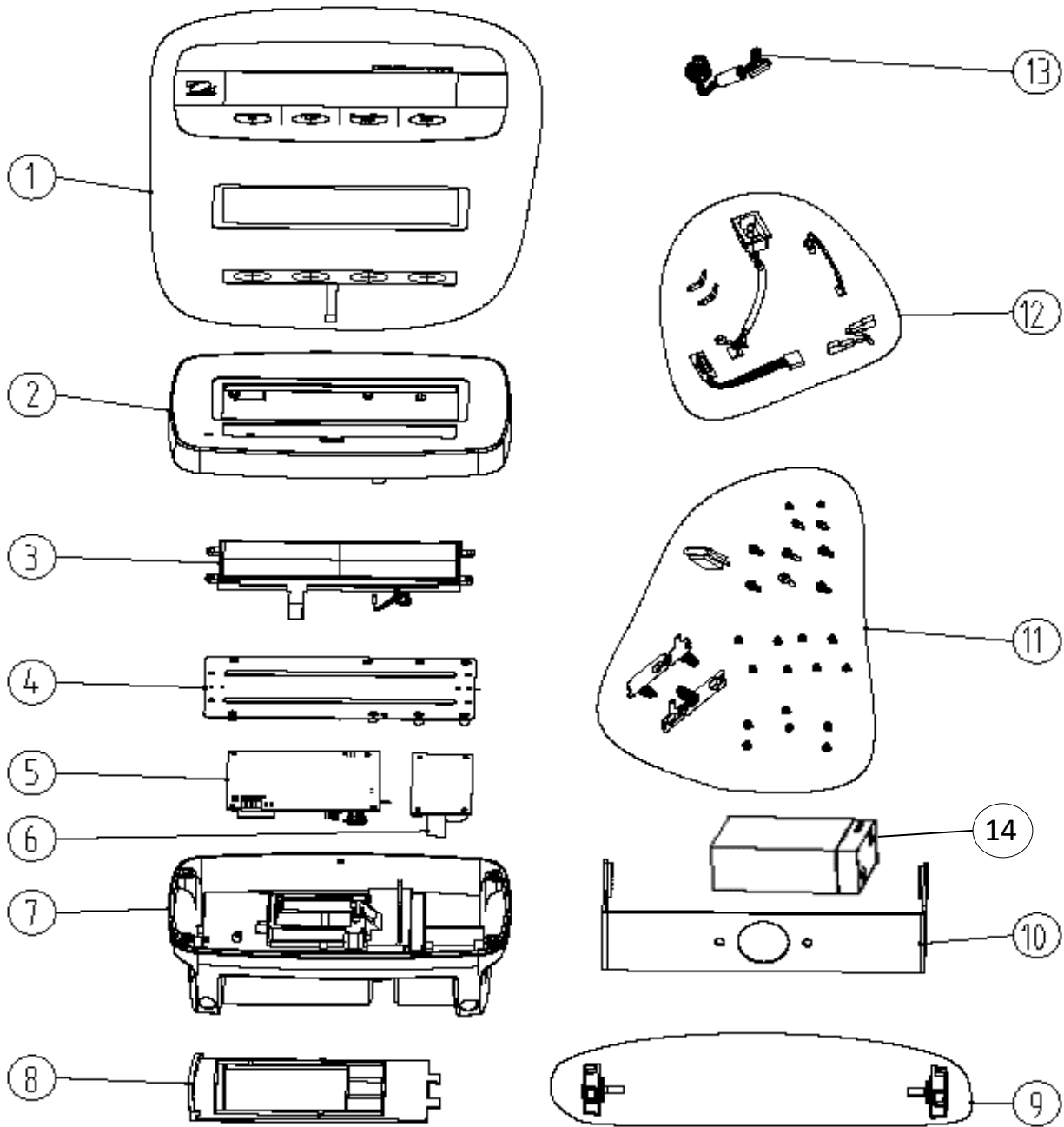
[Document update](#)

[i-DT33P](#)

[i-DT33XW](#)

Note: In one box models are using same spare part

Date	Update
2021/12/17	Initial release



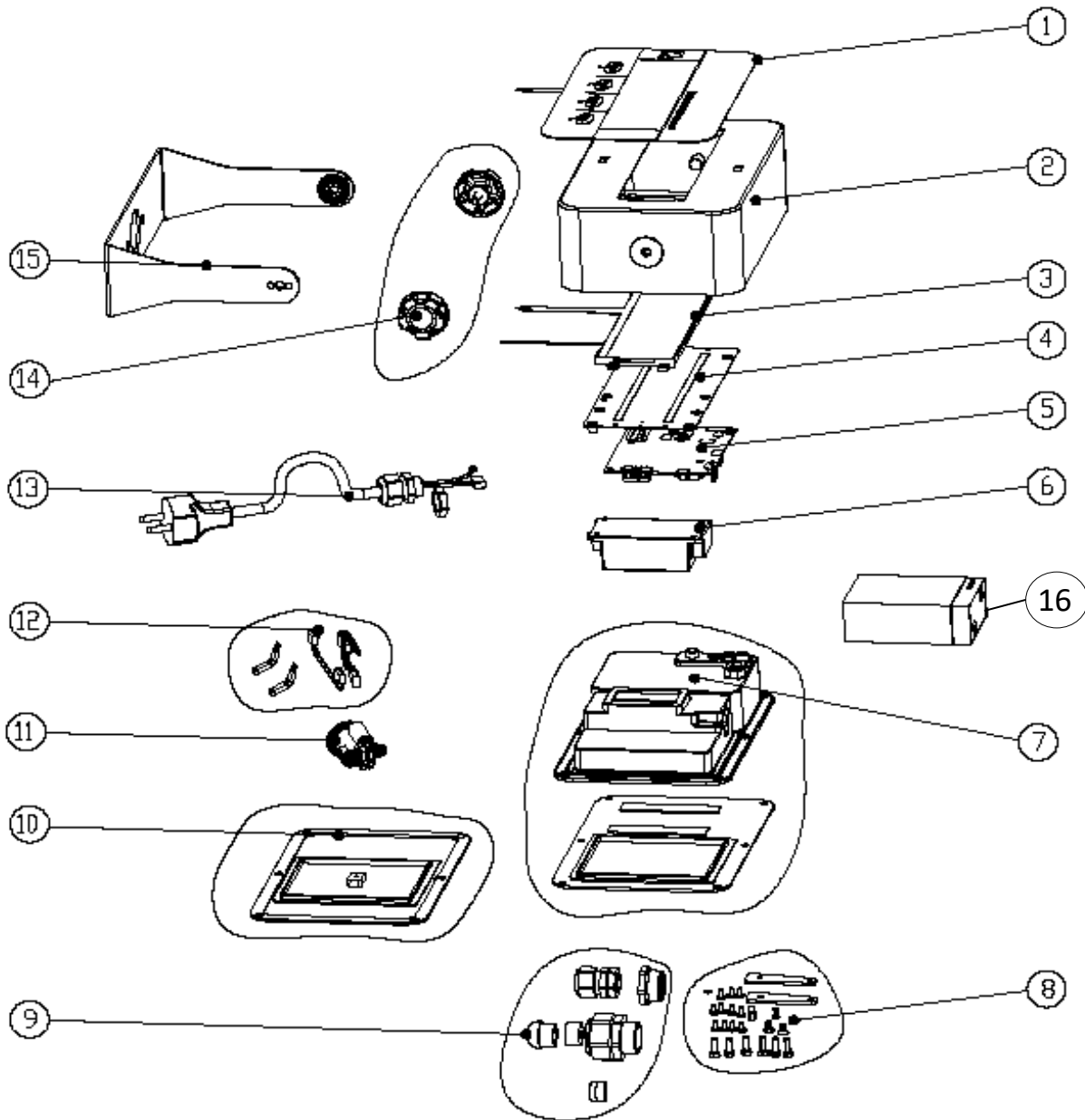
Part numbers are subject to change without notice.

Drawing Item	Part Number	Description	Comments
1	30707367	Function label Kit EN i-DT33P	Includes Function label, transparent PC pad, key pad
	30707548	Function label Kit ZH i-DT33P	
	30707549	Function label Kit JP i-DT33P	
	30707550	Function label Kit KR i-DT33P	
2	30707551	Top Housing Kit i-DT33P	
3	30707553	LCD display Kit i-DT33	
4	30707554	Support Kit Main PCBA i-DT33	
5	30707556	PCB Main AD7191 i-DT33P	For EU approve and ZH models
	30707557	PCB Main ADS1230 i-DT33P	Except for EU approve and ZH models
6	30037392	Switch Power Supply	
7	30707552	Bottom Housing Kit i-DT33P	
8	30707559	Battery cover Kit i-DT33P	
9	30707555	Knob Kit i-DT33	
10	30707558	Bracket Kit U Bracket Assembly i-DT33P	
11	30707563	Hardware Kit i-DT33P	Includes the screws, washers, battery contact elastic piece, seal plug...
12	30707562	Hardware kits internal cable i-DT33P	
13	30427858	Loadcell Connector, Short, TD52	
14	30728939	Rechargeable battery i-DT33	
NS	30379678	Box Terminal TD52	
NS	30707564	Box complete Kit i-DT33P	
NS	72994872	Power Cord CN	
NS	83020937	Power Cord AU	
NS	83020938	Power Cord US	
NS	83020939	Power Cord UK	
NS	83020940	Power Cord EU	
NS	83020941	Power Cord JP	

Notes: Please find the accessory in table below, if it's needed for service.

P/N	Description
30429666	Ethernet kit TD52 DT61XW i-DT33
30699120	USB Device Kit i-D33
30699121	In use cover i-DT33
30699122	Rechargeable battery Kits
30696595	Column Assembly 330mm SS i-D33
30696596	Column Assembly 680mm SS i-D33
30696597	Column Assembly 330mm CS i-D33
30696598	Column Assembly 680mm CS i-D33
30696599	Column Assembly 980mm CS i-D33
30696600	Front mount Kit i-D33
30045641	SF40 Printer
80500525	Cable RS232 IBM 9P Male-to-Female

Part numbers are subject to change without notice.



Part numbers are subject to change without notice.

Drawing Item	Part Number	Description	Comments
1	30707567	Function label Kit EN i-DT33XW	
	30707568	Function label Kit ZH i-DT33XW	
	30707569	Function label Kit JP i-DT33XW	
	30707570	Function label Kit KR i-DT33XW	
2	30707565	Top Housing Kit i-DT33XW	
3	30707553	LCD display Kit i-DT33	
4	30707554	Support Kit Main PCBA i-DT33	
5	30707571	PCB Main AD7191 i-DT33XW	For EU approve and ZH models
	30707572	PCB Main ADS1230 i-DT33XW	Except for EU approve and ZH models
6	30037392	Switch Power Supply	
7	30707566	Bottom Housing Kit i-DT33XW	Includes the rubber seal
8	30707578	Hardware kits i-DT33XW	Includes the screws, washers, LFT cover...
9	30707560	Connector Kit i-DT33XW	
10	30707579	Rubber Kit i-DT33XW	
11	30427858	Loadcell Connector, Short, TD52	
12	30707577	Hardware kits internal cable i-DT33XW	
13	30379658	Power Cord UK TD52XW	
	30379659	Power Cord JP TD52XW	
	30379660	Power Cord EU TD52XW	
	30379661	Power Cord US TD52XW	
	30379662	Power Cord AU TD52XW	
	30379708	Power Cord CN TD52XW	
14	30707555	Knob Kit i-DT33	
15	30707573	Bracket Kit U bracket Assembly i-DT33XW	
16	30728939	Rechargeable battery i-DT33	
NS	30379678	Box Terminal TD52	
NS	30707580	Box complete Kit i-DT33XW	

Notes: Please find the accessory in table below, if it's needed for service.

P/N	Description
30429666	Ethernet kit TD52 DT61XW i-DT33
30699120	USB Device Kit i-D33
30699121	In use cover i-DT33
30699122	Rechargeable battery Kits
30696595	Column Assembly 330mm SS i-D33
30696596	Column Assembly 680mm SS i-D33
30696597	Column Assembly 330mm CS i-D33
30696598	Column Assembly 680mm CS i-D33
30696599	Column Assembly 980mm CS i-D33
30696600	Front mount Kit i-D33
30045641	SF40 Printer
80500525	Cable RS232 IBM 9P Male-to-Female

Part numbers are subject to change without notice.

